

Italian marine IBAs

Giorgia Gaibani – Lipu BirdLife Italy
Jacopo G. Cecere - ISPRA



**Protecting seabirds in the Mediterranean
International Workshop**



2002



Lipu identified
45 marine IBAs
as 'Seaward
extension to breeding
colony' and
'Non-breeding
(coastal)
congregation'.

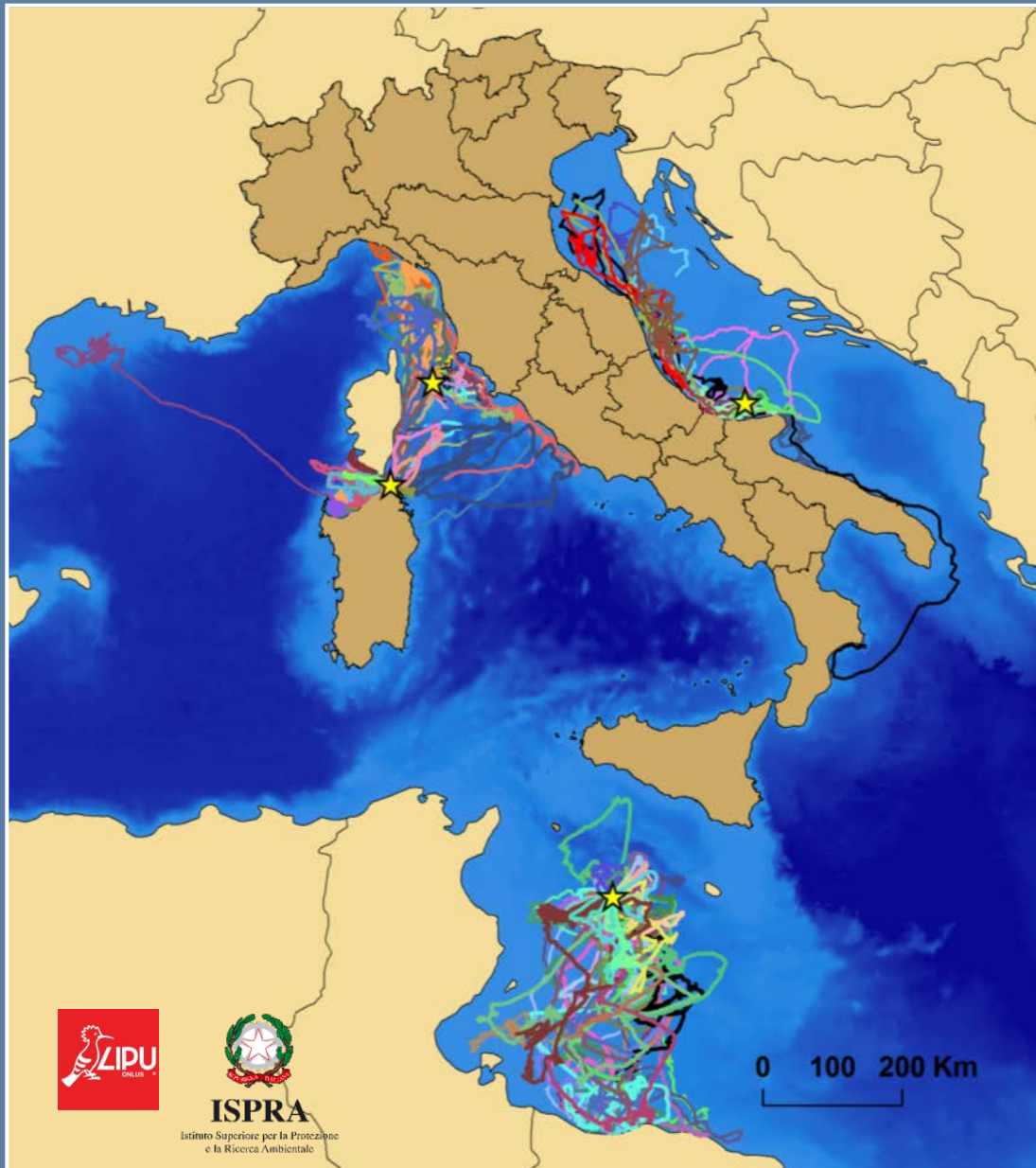
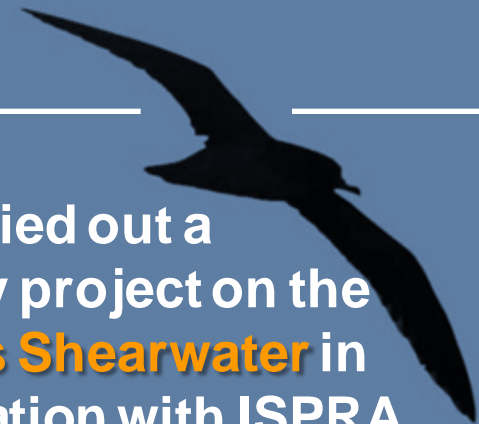
2008

Lipu carried out 1 year project with the aim to assess how to apply the **BirdLife standardized methodology** for the identification of marine IBAs at the Italian context.



The project was funded by the Italian Ministry for Environment and triggered the telemetry study on the Scopoli's Shearwater.

2008-2013

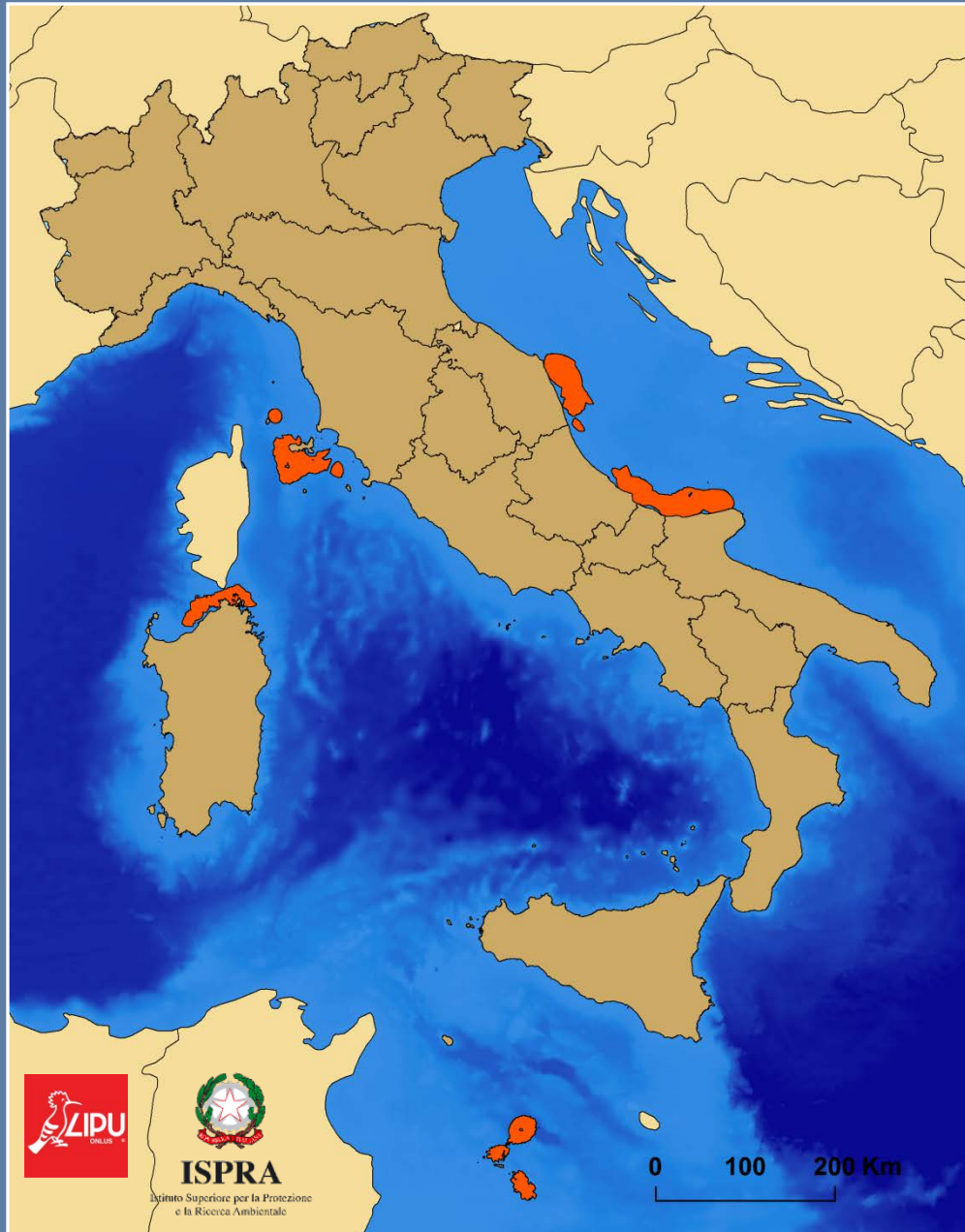


Lipu carried out a telemetry project on the **Scopoli's Shearwater** in collaboration with ISPRA

- ✓ 219 foraging trips
- ✓ 188 tracked individuals
- ✓ 50 during incubation
- ✓ 138 during chick-rearing
- ✓ 4 colonies:

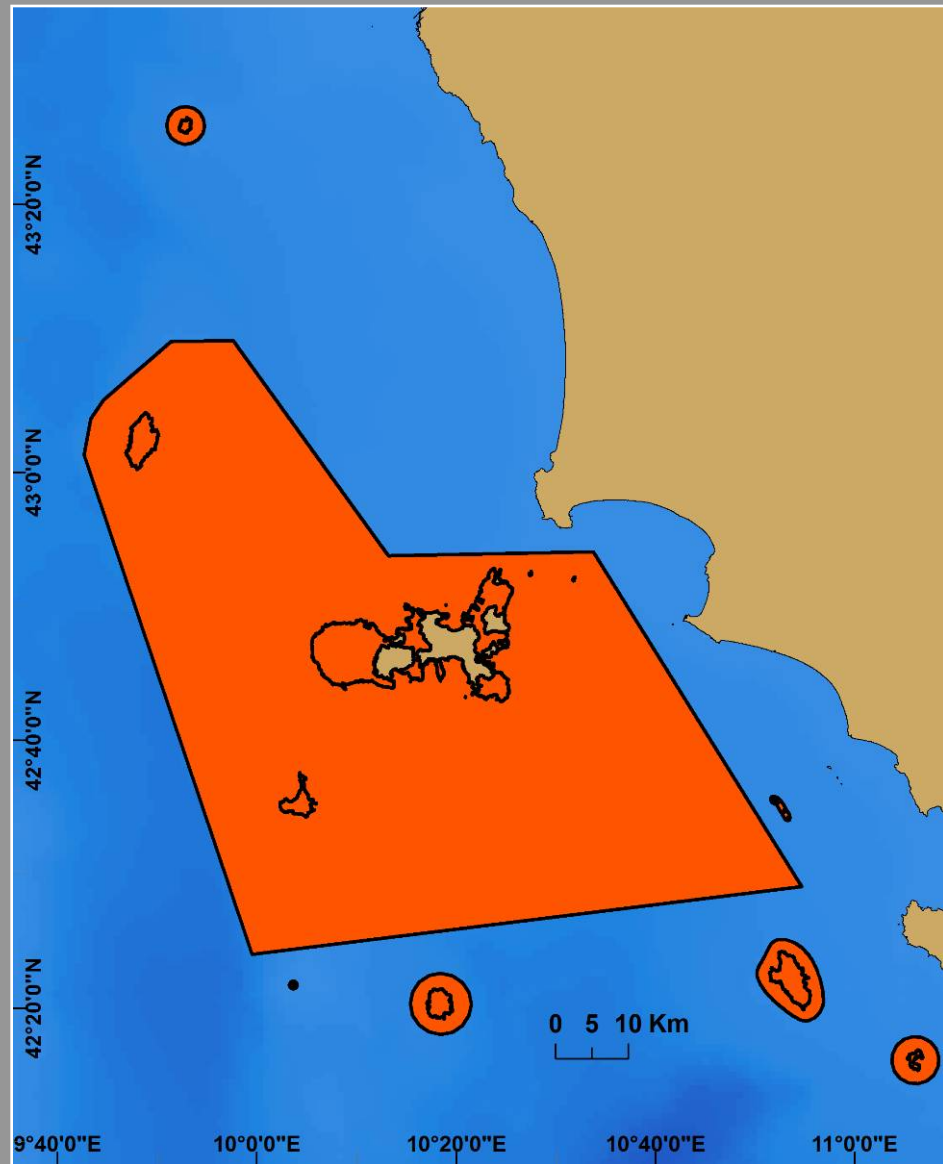
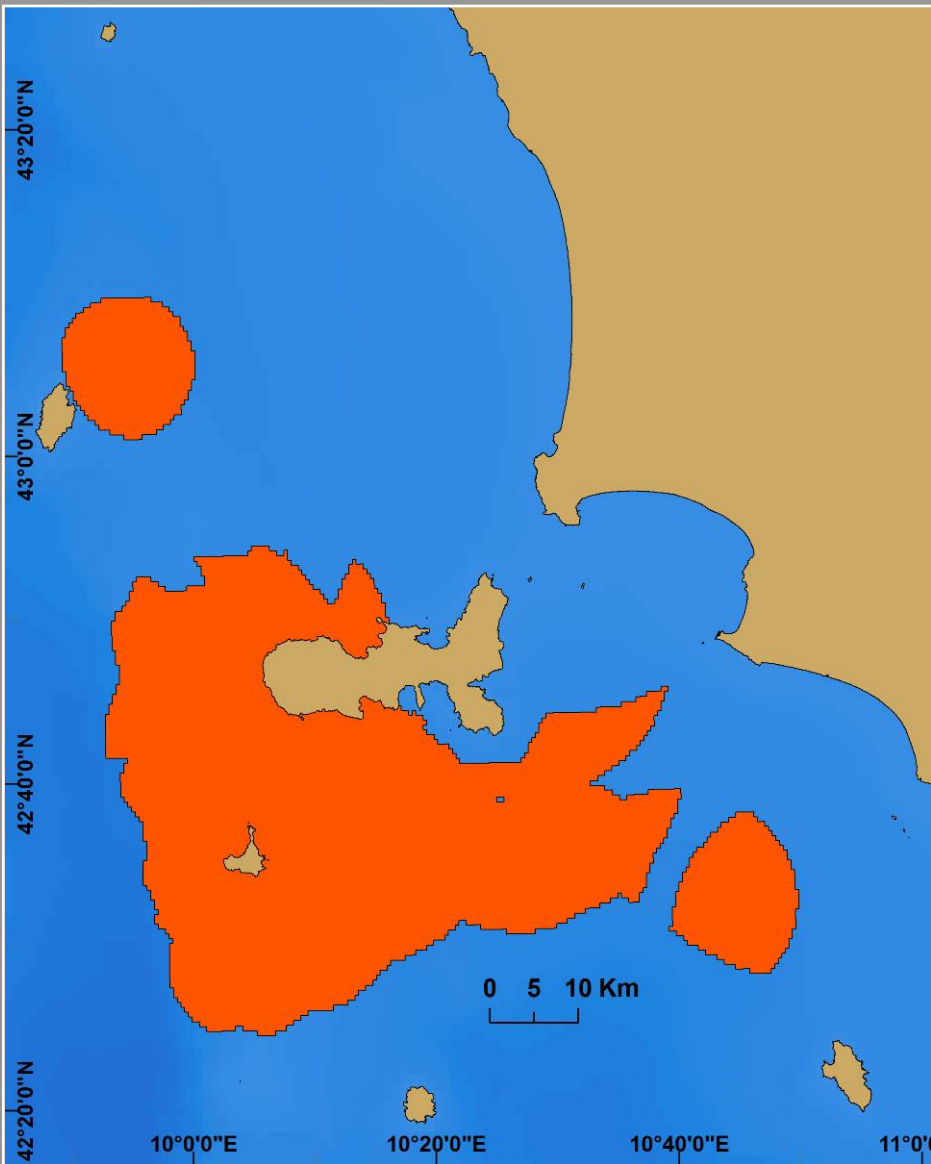
Linosa Island
Tremiti Arch.
Tuscany Arch.
La Maddalena Arch.

2014

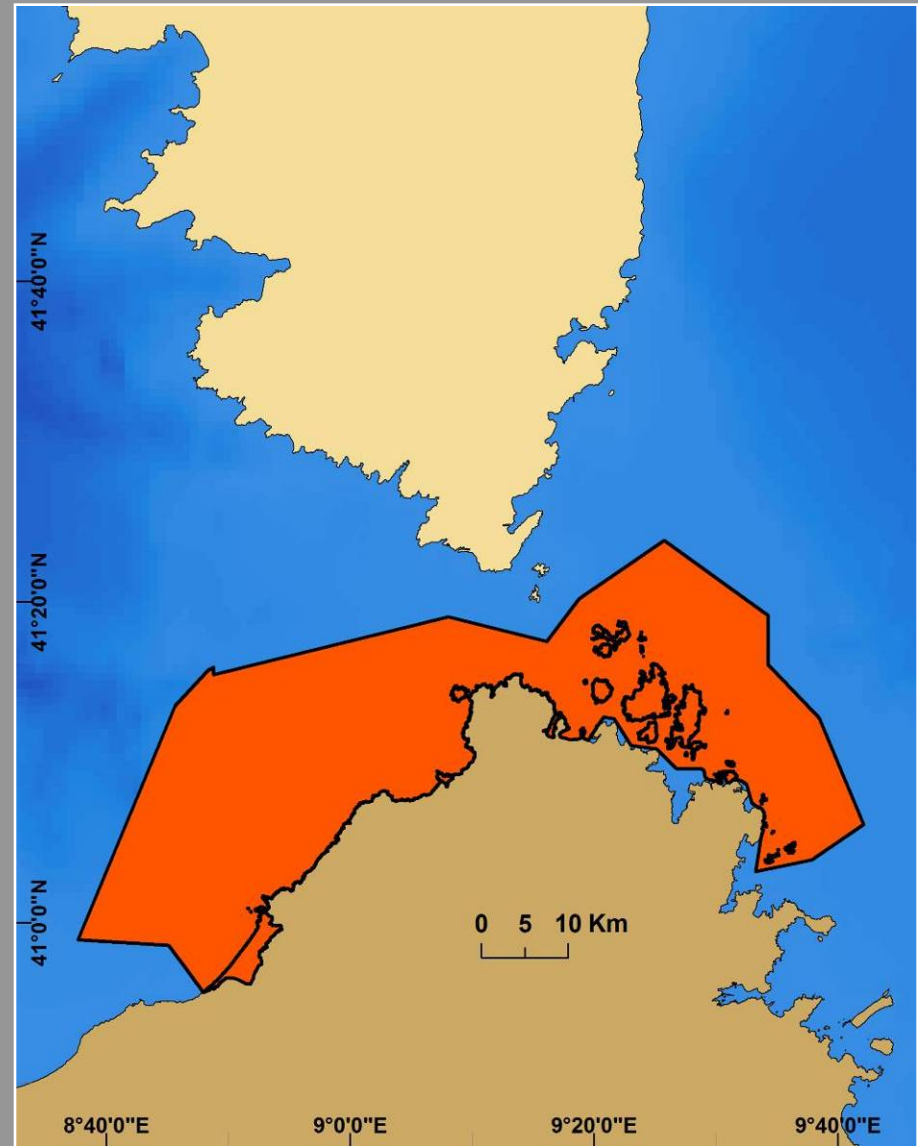
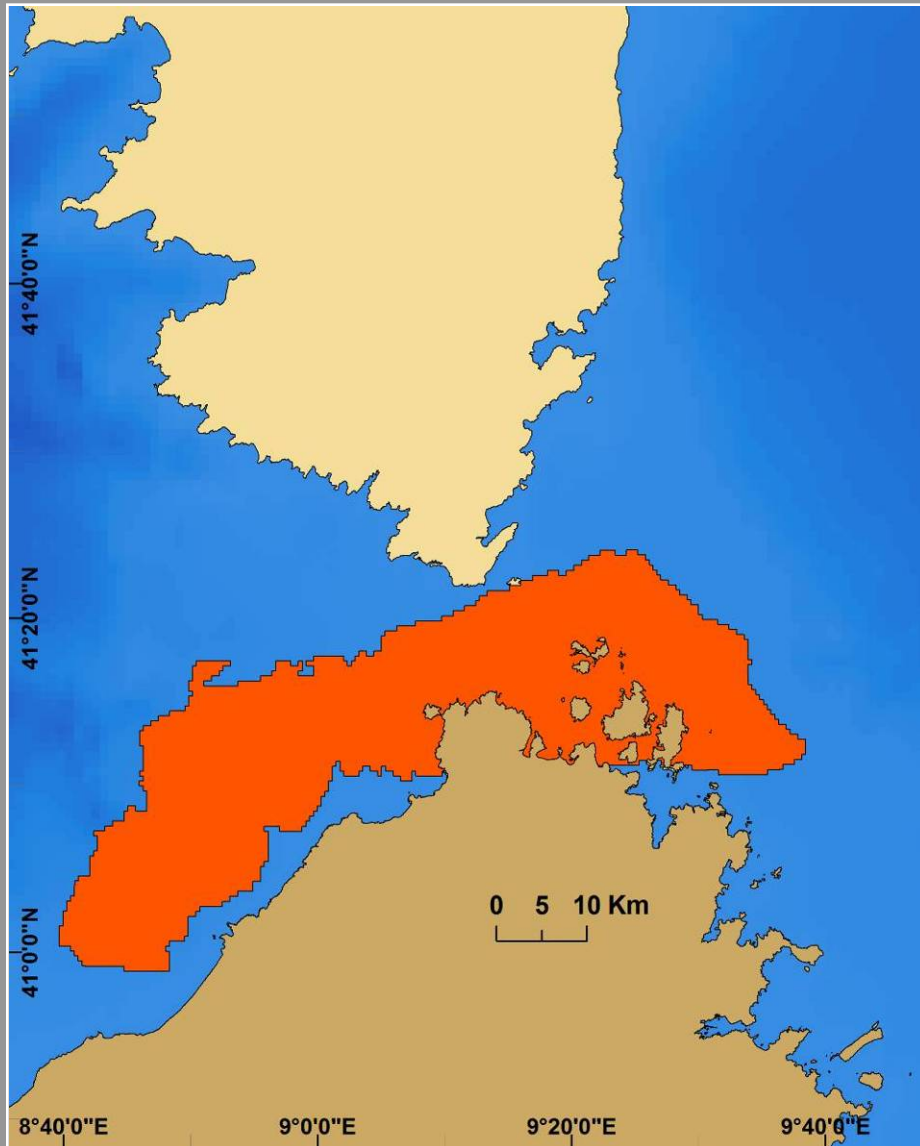


We analysed foraging tracks following the recent BirdLife methodology and we identified the **hotspot areas** for the four populations

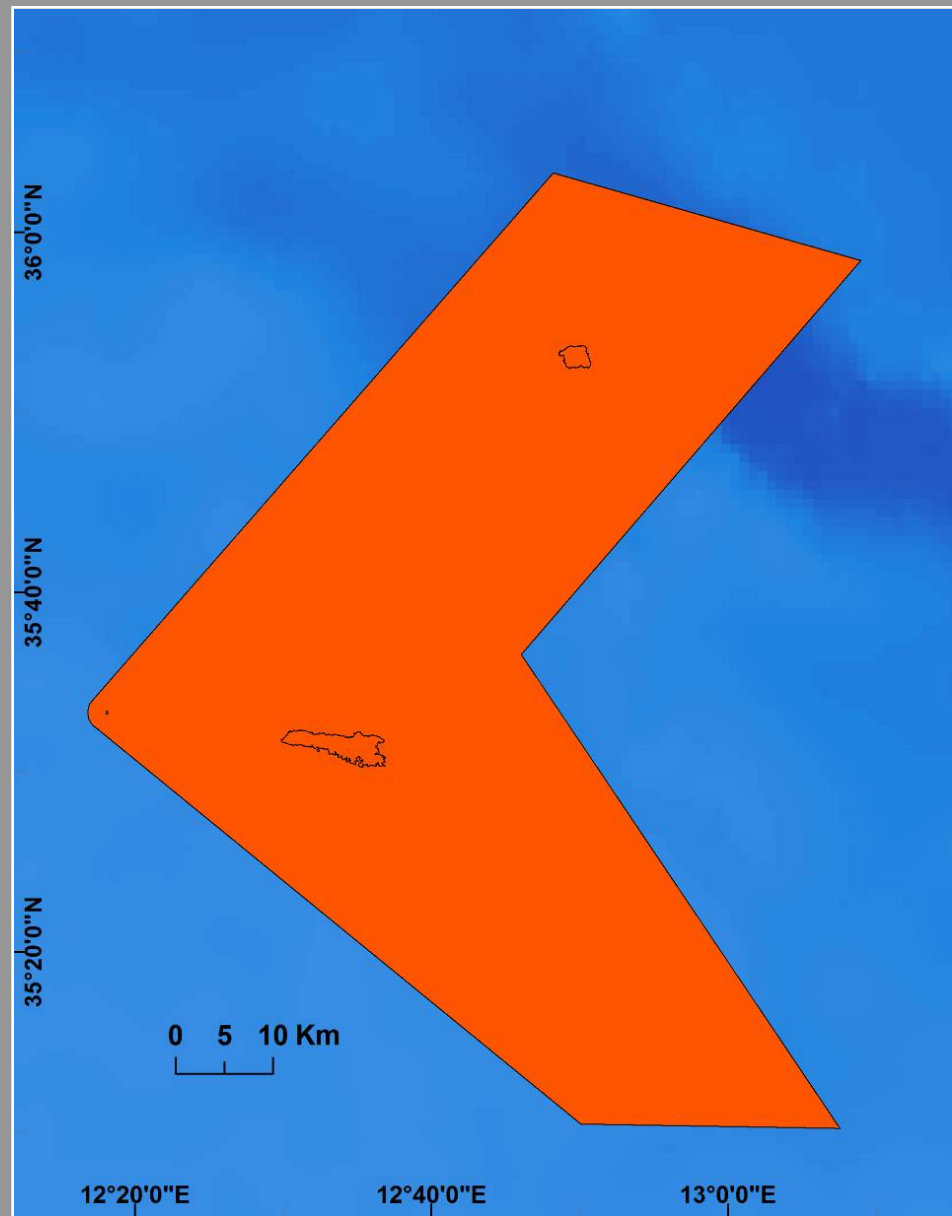
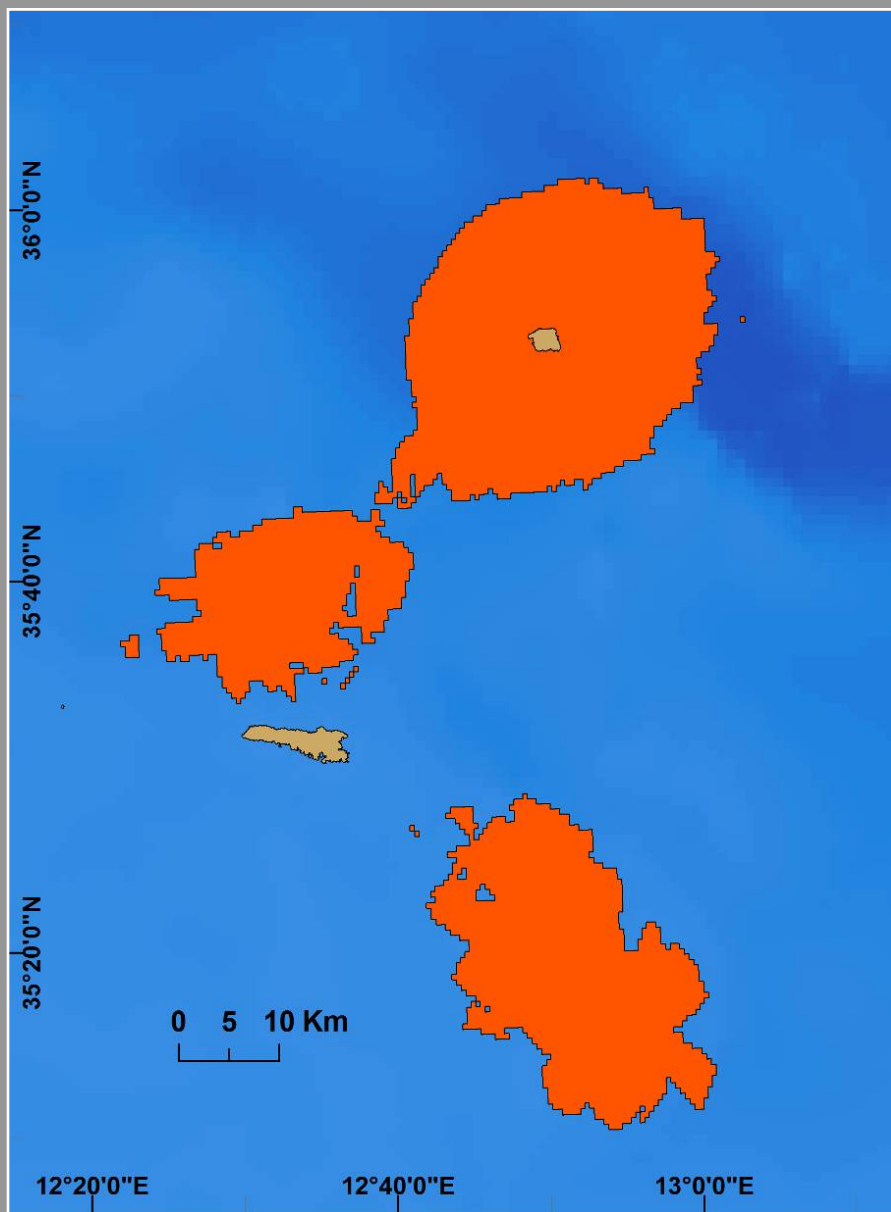
IBA 096 ARCIPELAGO TOSCANO



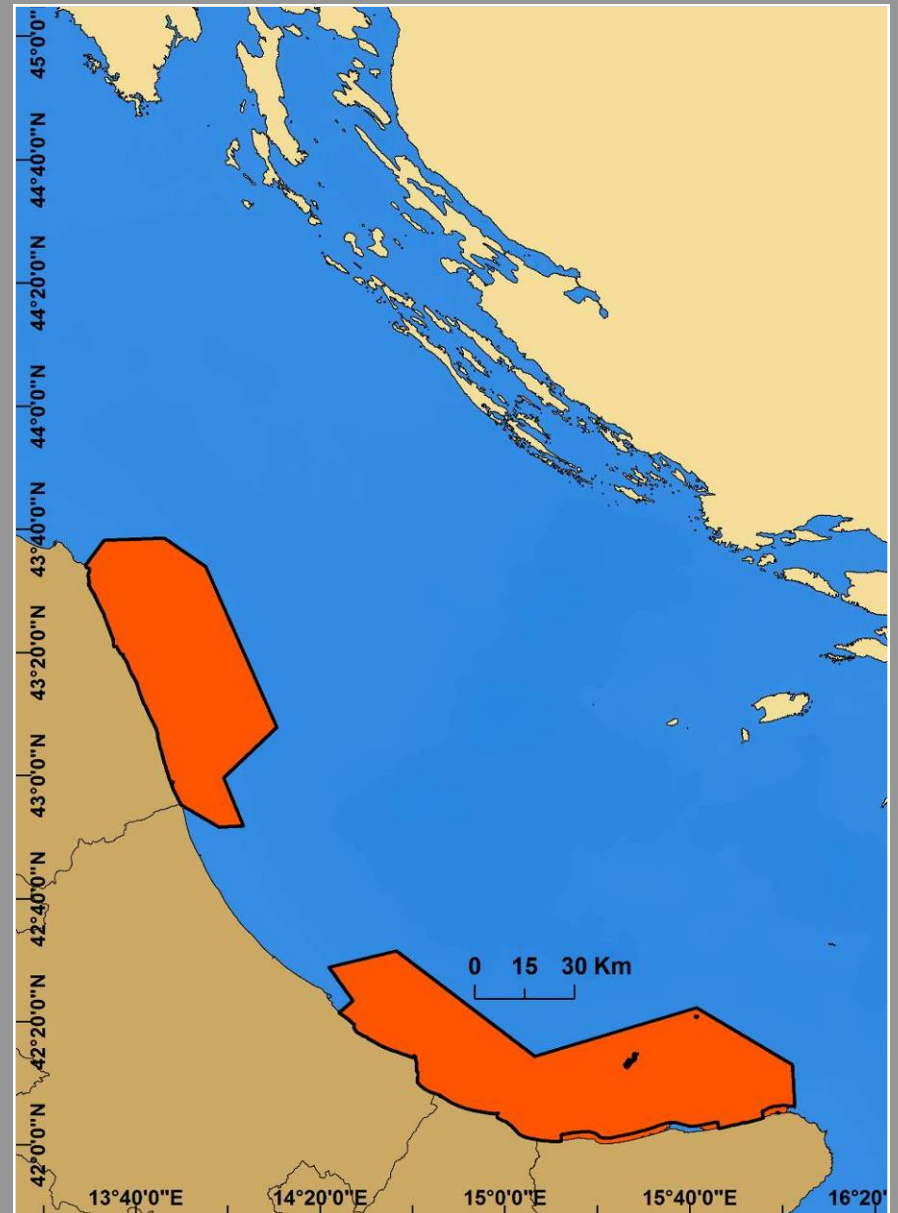
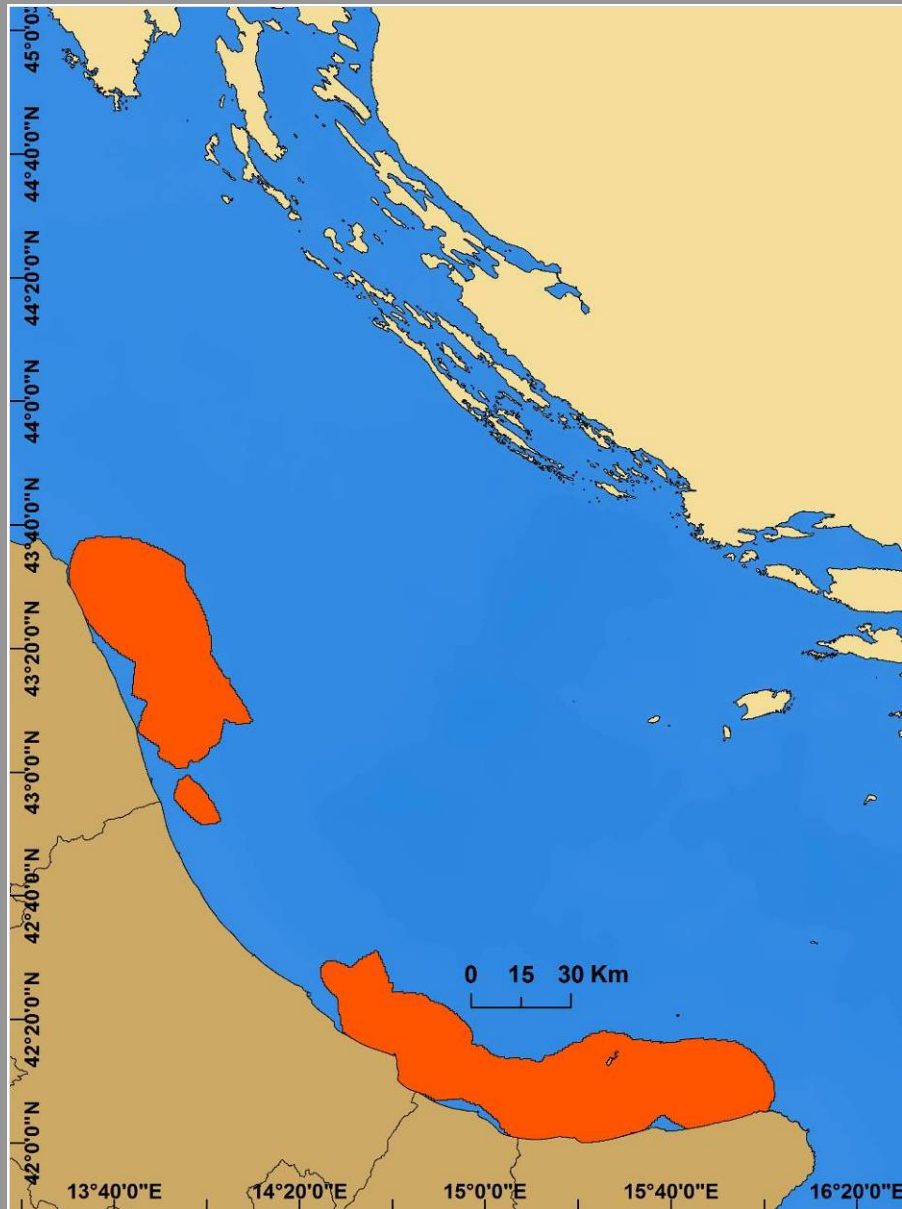
IBA 223 - SARDEGNA SETTENTRIONALE



IBA 221 ISOLE PELAGIE



IBA 222 - MEDIO ADRIATICO



Next steps:



- 1) Transferring the experience on Scopoli's shearwater and the BL methodology on the other seabird species
- 2) Sharing data-base and information with other groups with the aim to complete the marine IBAs network
- 3) Designating the marine IBA network as SPAs
- 4) Providing marine SPAs with management plans

Main blockages:

- 1) Lack of funds
- 2) Weak support by the regional authorities
- 3) Weak endorsement by the Ministry for Environment

A special thank to
all the **volunteers** for their great job

*Photos by
Bruno D'Amicis*

